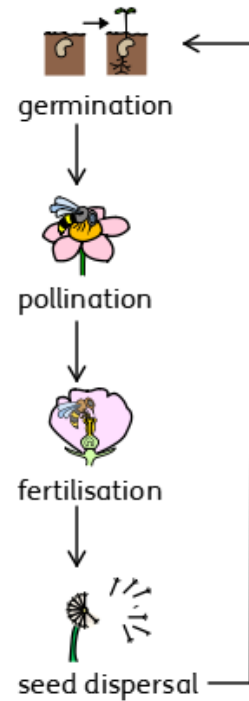
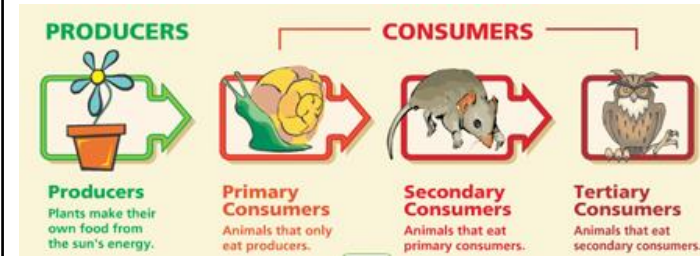
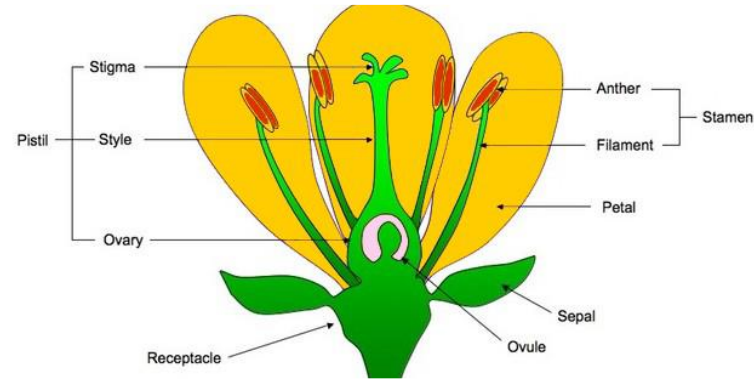


Darlinghurst Academy Year 5: Spring 2 - Do we make the most of where we live?

Vocabulary

anther	the part of a stamen that produces and releases the pollen
dispersed	scattered, separated, or spread through a large area
fertilisation	male and female cells meet to form an embryo or seed
germination	if a seed germinates or if it is germinated, it starts to grow
petal	thin coloured or white parts which form part of the flower
pollen	a fine powder produced by flowers. It fertilises other flowers of the same species so that they produce seeds
pollination	To pollinate a plant or tree means to fertilise it with pollen. This is often done by insects
reproduction	when an animal or plant produces one or more individuals similar to itself
stigma	the top of the centre part of a flower which takes in pollen

Parts of a flower



Life cycle of a bee

