

Darlinghurst Academy Year 6: Spring 2 - Let's go round again?

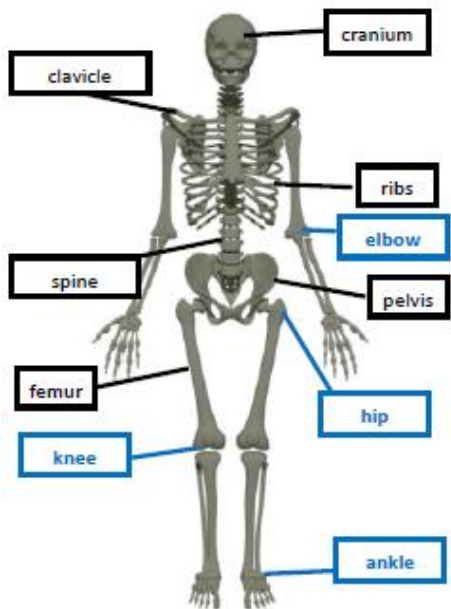
Vocabulary

digestion	breaking down ingested food material
intestines	the tubes in your body through which food passes when it has left your stomach
organ	a part of your body that has a particular purpose
stomach	the organ inside your body where food is digested before it moves into the intestines
skeleton	the framework of bones in your body

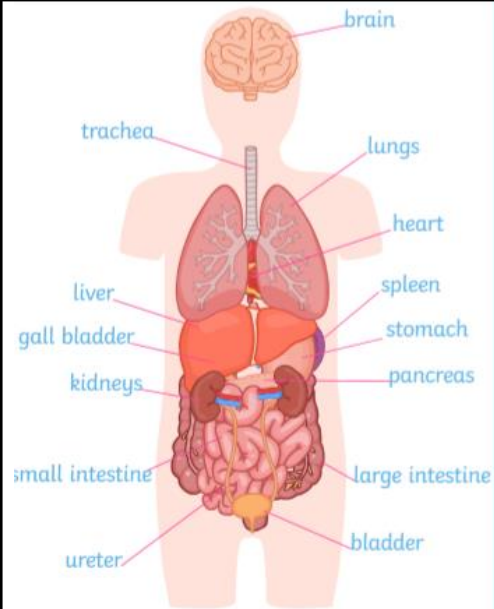
Vocabulary

Battery/ cell	small devices that provide the power for electrical items such as torches
circuit	a complete route which an electric current can flow around
conductor	a substance that heat or electricity can pass through or along
current	a flow of electricity through a wire or circuit
electricity	a form of energy that can be carried by wires and is used for heating and lighting, and to provide power for devices
insulator	a non-conductor of electricity or heat

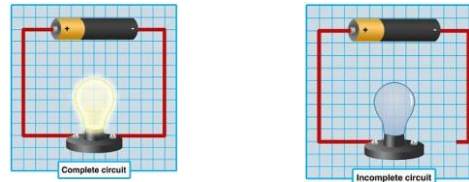
Skeleton



Organs of the human body



Circuits



- A circuit always needs a power source, such as a battery, with wires connected to both the positive (+) and negative (-) ends.
- A circuit can also contain other electrical components, such as bulbs, buzzers or motors, which allow electricity to pass through.
- Electricity will only travel around a circuit that is complete, i.e. has no gaps.

Circuit symbols

